

Dry and Dusty

Traditional

Arrangement (c) copyright 2006 by Donald J Borchelt
All rights reserved.

D

6

A7 D A7 1. D

11

2. D

15

A7 D

20

A7

24

D A7 1. D 2. D

Dry and Dusty - Traditional

29

0 0 0 0 0 0 0 0

0 0 0 0 0 0 0 0

0 0 0 0 0 0 0 0

0 0 0 0 0 0 0 0

Sl 2→4 5 5-7-5 5-7-5 H Po H Po

3 3

33

0 0 0 0 0 0 0 0

0 0 0 0 0 0 0 0

0 0 0 0 0 0 0 0

0 0 0 0 0 0 0 0

Sl 2→4 5 5 9 H Po

A7 D

37

0 0 0 0 0 0 0 0

0 0 0 0 0 0 0 0

0 0 0 0 0 0 0 0

0 0 0 0 0 0 0 0

H 10-12-10 10-12 10-12-10 10-12 9 H 10-12-10 10-12 9

A7

41

0 0 0 0 0 0 0 0

0 0 0 0 0 0 0 0

0 0 0 0 0 0 0 0

0 0 0 0 0 0 0 0

H 10-12-10 10-12 12 14 12 14 9 H 10 9

D A7 1. D

45

0 0 0 0 0 0 0 0

0 0 0 0 0 0 0 0

0 0 0 0 0 0 0 0

0 0 0 0 0 0 0 0

H Po 14-16-14 H 10-12 12 14 H Po 14-16-14 H 10-12 9 10

3 3

49

0 0 0 0 0 0 0 0

0 0 0 0 0 0 0 0

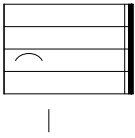
0 0 0 0 0 0 0 0

0 0 0 0 0 0 0 0

H Po 14-16-14 H 10-12 12 14 9 10 H Po 14 1/4 9 10 0

3 A7 D

54



This is an old Ozark mountain tune that I picked up in a jam session one night with Ed Britt and banjo picker/park ranger Alex Demas. The timing is a little unusual in the second part. The quick little hammer on/pull-off at the 2nd string, 14th fret is really just a quick trill.